

School Parking

Have you considered...

- Walking or cycling to school instead? This is a great way to contribute to a child's 60 minutes of activity a day and is easy to incorporate into your daily routine. Try it once a week at first and see how easy it can be.
- Parking nearby or getting off the bus two stops earlier and walking the rest of the way. If you live too far away to walk or need your car for your commute to work you can still walk part of the way. Doing this everyday could add up to an adult's recommended 30 minutes of moderate exercise, 5 times a week.
- Car Sharing is a great way to reduce congestion and save you pennies. Team up with other parents or carers who live nearby- share the cost and halve the hassle.

If you have a parking concern outside of your school report it online at www.lancashire.gov.uk/parking

For more information on this leaflet please email Road Safety Team at safetravelteam@lancashire.gov.uk



Lancashire Constabulary

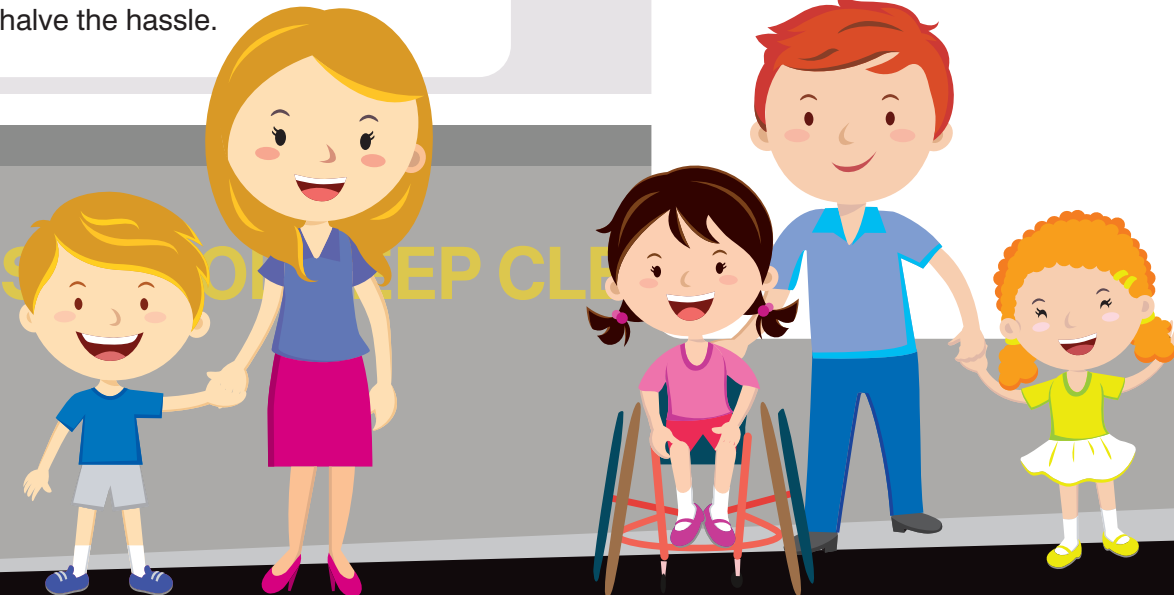
police and communities together

change 4 life
Eat well Move more Live longer

Sign up to Change4Life at www.change4life.co.uk



School



A Guide to Parking Safely at Our Schools

Inconsiderate and dangerous parking around our schools has become a big problem, putting the safety of children and others at risk. We all want to keep our children safe around schools, so here's some top tips on how you can make a difference.

Did you know?

One in five cars in the morning rush hour is taking children to school

How Can You Help?

- ✓ Keep your speed down
- ✓ Turn your engine off - do not idle
- ✓ Leave the middle of the road free, with enough room for other road users to easily pass through
- ✓ Make sure your child leaves and enters your vehicle safely onto the pavement
- ✓ Check for pedestrians and cyclists before opening a car door
- ✓ Leave enough room on pavements for pedestrians, pushchairs & wheelchairs to get past
- ✓ Take care when reversing
- ✓ do not park on zig zag lines

Please keep restricted areas clear...

- ✓ Zig Zags and school entrances
- ✓ Dropped kerbs
- ✓ Resident's driveways
- ✓ Opposite or within 10 meters of a junction- so that children can see cars and cars can see children

Your questions answered...

What would happen if I did park in a restricted area.

If you park in a restricted area you are putting children's lives in danger and for this reason school parking is regularly monitored and enforced. If you park in a restricted area you could receive a £70 fine.

Am I okay to park on zigzag markings if I am only there a few minutes?

No, under no circumstances should you park on zig zag markings at any time, these are there to protect school entrances and leave a clear view of the street for pedestrians.

Please park considerately around our schools and keep our children safe!

Don't Forget...

Congestion around schools is one of the main reasons given for dangerous parking and there are other ways you could do the school run...



Never park on zig zags or block school entrances